

Because life is

PettyTM
Real

11 Valley Drive
Barnoldswick
BB18 6HU



For Sale

£292,500

- Immaculate extended detached property
- Sought after location
- Ideal for a family
- Snug & lounge
- Fully fitted modern kitchen

- Dining room
- Three bedrooms
- Modern three piece shower room
- Driveway
- Gardens front & rear



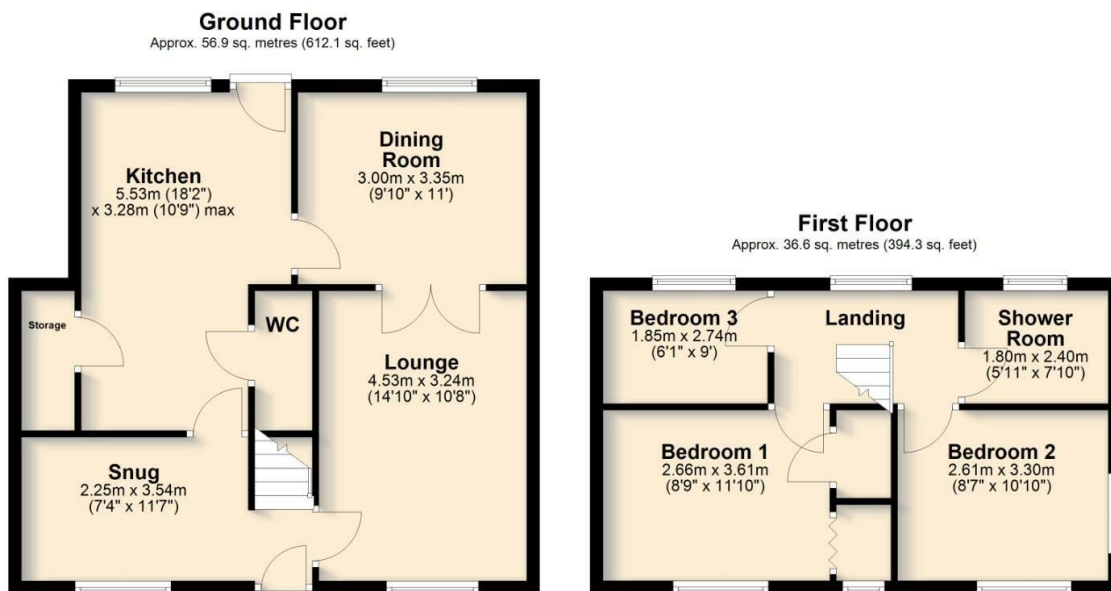
Located in a desirable residential area of Barnoldswick and available with no onward chain, this immaculate and extended detached property on Valley Drive offers stylish and well-proportioned living accommodation, perfect for families or those looking for a move-in-ready home. Thoughtfully upgraded and beautifully maintained, the property benefits from a spacious layout, modern fittings, and both front and rear outdoor spaces, making it an excellent choice for a variety of buyers.

Upon entering, the welcoming hallway leads to a bright and spacious lounge, providing a comfortable setting for relaxation. The separate dining room is ideal for family meals or entertaining guests, while the modern fitted kitchen boasts quality units, ample storage, and workspace. A versatile snug offers an additional reception space, perfect as a home office or reading area. Completing the ground floor is a convenient downstairs WC and a useful store for added practicality.

The first floor accommodates three well-proportioned bedrooms, each offering comfort and flexibility to suit individual needs. The modern three-piece shower room is finished to a high standard, providing a contemporary and functional space. The property has been designed with ease of living in mind, ensuring a practical and stylish environment throughout.

Externally, the front of the property features an Indian stone-paved driveway, providing ample parking for multiple vehicles. The rear garden is private and low maintenance, making it an ideal space for outdoor enjoyment. A charming summer house adds further appeal, offering a perfect retreat for relaxing or entertaining.

With its immaculate presentation, extended living space, and excellent outdoor areas, this detached home on Valley Drive is a superb opportunity for buyers seeking a high-quality residence in a sought-after location.



Total area: approx. 93.5 sq. metres (1006.4 sq. feet)

All floorplans provided by Petty Real are for guidance only. Please check all dimensions before making any decisions reliant upon them.
Plan produced using PlanUp.



These particulars, whilst believed to be accurate are set out as a general outline only for guidance and do not constitute any part of an offer or contract. Intending purchasers should not rely on them as statements of representation of fact, but must satisfy themselves by inspection or otherwise as to their accuracy. No person in this firm's employment has the authority to make or give any representation or warranty in respect of the property.